

# 2024 Stroke & Neurocritical Care Conference

**\*\*2-Day Course\*\***

**Wednesday, November 13, 2024 & Thursday, November 14, 2024**

**2:00pm—6:30pm each day**

**Theresa & Eugene M. Lang Center for Research and Education—Auditorium  
56-45 Main Street • Flushing, NY 11355**

**Wednesday, November 13, 2024 (Day 1)**

2:00PM *Opening Remarks*

**Section 1: Before and After Strokes: Risk Prevention and Maximize Recovery**

2:05 PM *Flu, COVID & Other Respiratory Virus and Stroke Risks*

Alexander E. Merkler, M.D., MS

2:40 PM *Stroke and Cardiovascular Risks and New Generation of Weight Loss Drugs*

Katharine Demigny, M.D.

3:20 PM *Stroke Rehabilitation and VNS-REHAB Trial*

Nasim A. Chowdhury, M.D., FAAPMR, CNT

4:00 PM *Questions & Answers*

**Section 2: The Known and Unknown: Controversies in Stroke and Neuro-Critical Care Management**

4:10 PM *Medical Management of ICH/Anticoagulation/APT Restart Time*

Santosh Murthy, M.D., MPH

4:50 PM *Blood Pressure and Hemodynamic Management for Intracranial Large Vessel Occlusion*

Baxter B. Allen, M.D.

5:30 PM *Overview of Thrombolysis and Thrombectomy for Acute Ischemic Stroke and Controversies*

Jay Yasen, M.D.

6:10 PM *Questions and Answers*

6:30 PM *Adjourn*

**Thursday, November 14, 2024 (Day 2)**

2:00PM *Opening Remarks*

**Section 3: The Interventions: Surgical and Endovascular Procedures for Critically Ill Patients**

2:05 PM *Various Types of Cranial Fistulas & Their Management*

Ning Lin, M.D.

2:40 PM *Cerebral Venous Interventions for Pulsatile Tinnitus & IIH*

Srikanth R. Boddu, M.D.

3:20 PM *Management of Subdural Hematoma and EMBOLISE Trial*

Jared Knopman, M.D.

4:00 PM *Questions and Answers*

**Section 4: Critical Issues: Challenges in the Neuroscience ICU**

4:10 PM *Traumatic Brain Injury and BOOST Trial*

Shamelia Y. Loiseau, M.D.

4:50 PM *The Brain Death Examination*

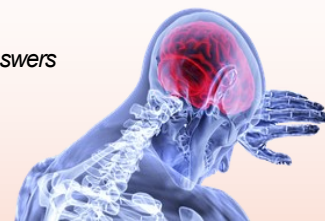
Melvin Parasram, D.O., MS

5:30 PM *Management of Status Epilepticus in the Neurocritical Care Unit*

Kenneth Han, M.D.

6:10 PM *Questions and Answers*

6:30 PM *Adjourn*



**Statement of Need:** Neurological disorders affect millions of Americans each year, with stroke being a leading cause of morbidity and mortality, especially in an aging population. To offer patients the most effective treatment options, it is essential that physicians and the interdisciplinary healthcare team remain updated on the latest advancements in medical and surgical treatments for neurological diseases.

**Target Audience:** Primary care physicians, neurologists, ER physicians, residents, fellows, interns, medical students, physician assistants, nurse practitioners, registered nurses and others caring for patients with neurological conditions. By providing in-depth education on these neurological conditions and the latest management strategies, this program will equip healthcare providers the skills to plan more effective treatment approaches, ultimately leading to better patient outcomes.

**Registration Fees:** \$50 Physicians & Physical Therapist/PT Assistants | \$25 General Registrants | No Fee: Physicians-in-training, NYPQ Physicians & Staff

**To Register:** [www.nypqcm.org](http://www.nypqcm.org); Scan QR code below

**Information:** Ms. Pamela Williams, Director of CME (O) 718-670-1419 • (E) [pgw9001@nyp.org](mailto:pgw9001@nyp.org)



 **NewYork-Presbyterian**  
Queens

# FACULTY

## Program Chairs

*Baxter B. Allen, M.D.*

Assistant Professor of Clinical Neurology

Weill Cornell Medicine

Director of Stroke Services

Attending Neurologist and Neurointensivist

NewYork-Presbyterian Queens

*Ning Lin, M.D.*

Associate Professor of Clinical Neurosurgery

Weill Cornell Medicine

Attending Neurosurgeon, Department of Surgery

NewYork-Presbyterian Queens

## Presenters

*Srikanth R. Boddu, M.D.*

Associate Professor of Radiology in Clinical Neurological Surgery

Weill Cornell Medicine

Director of Neurointervention

Department of Neurological Surgery

NewYork-Presbyterian Queens

*Nasim A. Chowdhury, M.D., FAAPMR, CNT*

Assistant Professor of Clinical Rehabilitation

Weill Cornell Medicine

Adjunct Professor of Rehabilitation & Regenerative Medicine

Columbia University Vagelos College of Physicians & Surgeons

Chief of Rehabilitation Medicine

NewYork-Presbyterian Queens

*Katharine Dermigny, M.D.*

Assistant Professor of Clinical Neurology

Weill Cornell Medicine

Attending Neurologist

NewYork-Presbyterian Queens

*Kenneth Han, M.D.*

Assistant Professor of Clinical Neurology

Weill Cornell Medicine

Attending Physician, Department of Neurology

NewYork-Presbyterian Queens

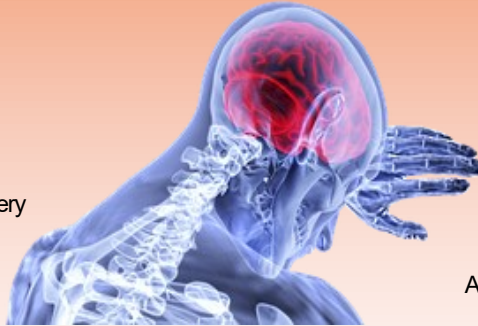
*Jared Knopman, M.D.*

Associate Professor of Neurological Surgery

Weill Cornell Medicine

Attending Neurosurgeon & Interventional Neuroradiologist

NYP/Weill Cornell Medical Center



## Presenters (cont'd)

*Shamelia Y. Loiseau, M.D.*

Assistant Professor of Clinical Neurology

Weill Cornell Medicine

Attending Neurointensivist

NewYork-Presbyterian Queens

*Alexander E. Merkle, M.D., MS*

Assistant Professor of Neurology

Weill Cornell Medicine

Attending Neurologist

NYP/Weill Cornell Medical Center

*Santosh Murthy, M.D., MPH*

Associate Professor of Clinical Neurology

Weill Cornell Medicine

Attending Neurologist

NYP/Weill Cornell Medical Center

*Melvin Parasram, D.O., MS*

Assistant Professor of Clinical Neurology

Weill Cornell Medicine

Attending Neurologist

NewYork-Presbyterian Queens

*Jay Yasen, M.D.*

Assistant Professor of Clinical Neurology

Weill Cornell Medicine

Attending Neurologist

NewYork-Presbyterian Queens

**Accreditation:** NewYork-Presbyterian Queens is accredited by the Medical Society of the State of New York to provide continuing medical education for physicians.

NewYork-Presbyterian Queens designates this live activity for a maximum of **9.0**

**AMA PRA Category 1 Credit(s)**<sup>™</sup>. Physicians should claim only the credit commensurate with the extent of their participation in the activity.

**CEHs for Physical Therapists & PT Assistants:** NewYork-Presbyterian Queens is recognized by the New York State Department of Education's State Board for Physical Therapy as an approved provider of physical therapy and physical therapist assistant continuing education. This program has been approved for a maximum of **10.8 contact hours**.

**Disclosure Statement:** NewYork Presbyterian Queens relies upon planners and faculty participants in its CME activities to provide educational information that is objective and free of bias. In this spirit, and in accordance with the guidelines of MSSNY and ACCME, all speakers and planners for CME activities must disclose any relevant financial relationships with commercial interests whose products, devices or services may be discussed in the content of a CME activity that might be perceived as a real or apparent conflict of interest. Any discussion of investigational or unlabeled uses of a product will be identified.

**Please note:** With our Zoom platform, we are able to document the length of your participation. Physicians claim credit based on participation time, rounded to the nearest quarter hour; this is the number of credits awarded. Zoom links for this virtual conference will be provided to registrants prior to the activity.