

REGISTRATION

Tuesday, October 25, 2016
7:30 am-1:30 pm
NewYork-Presbyterian/Queens
Lang Center Auditorium
56-45 Main Street, Flushing, NY

STROKE CONFERENCE

UPDATES & DEVELOPMENTS

THREE EASY WAYS TO REGISTER:

- 1 **Online:** Go to website: www.nypqcme.org and pay via credit card
- 2 **Fax:** This form with credit card information to: **718-661-7925**
- 3 **Mail:** This form with a check made payable to:
NYP/Queens-Continuing Medical Education
Mail to: Pamela Williams, Dir., Continuing Medical Education
NewYork-Presbyterian/Queens
56-45 Main Street, Flushing, NY 11355

REGISTRATION FEE-Please check one.

- \$50/Physician
- \$25/General Registrant
- No Fee**/Physicians-in-training, NYP/Queens Physicians & Staff
(copy of NYP/Queens ID required, pre-registration requested)

Questions?
718-670-1419

Last Name _____

First Name _____

MD _____ General Registrant _____

Mailing Address _____

City/State/Zip _____

Phone _____ Fax _____

E-mail _____

Affiliation _____

Yes. I wish to pay by credit card. Card holder name ▼

Charge \$ _____ to my VISA MasterCard

American Express Discover Security Code _____

Card Number _____

Expiration Date ____ / ____ / ____

Authorizing Signature _____

 **NewYork-Presbyterian
Queens**

PRESORTED
FIRST CLASS MAIL
U.S. POSTAGE
PAID
SMITHTOWN, NY
PERMIT NO. 15

 **NewYork-Presbyterian
Queens**
NewYork-Presbyterian/Queens
Continuing Medical Education
56-45 Main Street
Flushing, NY 11355



JBRH
comp

STROKE CONFERENCE

UPDATES & DEVELOPMENTS

TUESDAY
OCTOBER 25,
2016

7:30 am-1:30 pm
NewYork-Presbyterian/Queens
Lang Center Auditorium
56-45 Main Street, Flushing, NY

CHAIR

Gary L. Bernardini, MD, PhD
Professor and Chair
Department of Neurology
NewYork-Presbyterian/Queens
Vice-Chair, Department of Neurology
Weill Cornell Medical College

CREDIT

4.5 AMA PRA Category 1 Credit(s)[™]

TO REGISTER

718-670-1419
www.nypqcme.org

 **NewYork-Presbyterian
Queens**

STROKE CONFERENCE

UPDATES & DEVELOPMENTS

TUESDAY, OCTOBER 25, 2016 • 7:30 AM-1:30 PM



LOCATION

NewYork-Presbyterian/Queens
Theresa and Eugene M. Lang Center for Research and Education-Auditorium
56-45 Main Street, Flushing, NY

STATEMENT OF NEED

Despite advances in stroke care that have led to stroke falling to the fifth leading cause of death in the United States, the number of people having strokes continues to rise due to the aging population and indications of stroke occurring in younger age groups. Stroke remains a devastating disease that can result in significant disability. Stroke care emphasizes risk assessment, prevention, early diagnosis, delivery of advanced therapies, monitoring according to the latest stroke guidelines, and treatment in stroke-designated centers. Physicians and health care providers require updates on the latest diagnostic and therapeutic approaches in order to provide optimal patient care. This stroke conference will provide attendees with evidence—based information on the following key topics: stroke overview, mechanism of stroke due to atrial cardiopathy, stroke in patients with cancer, management of carotid disease, advances in stroke treatment in the field with the Mobile Stroke Unit, and medical and surgical management of intracerebral hemorrhage.

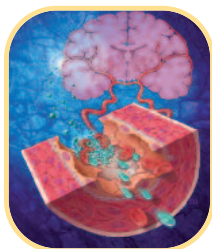
TARGET AUDIENCE

Primary Care Physicians, Neurologists, ER Physicians, Residents, Fellows, Interns, Medical Students, Physician Assistants, Nurse Practitioners, Registered Nurses, and others involved in the care of ischemic stroke patients.

EDUCATIONAL OBJECTIVES

It is intended that this NYP/Queens CME activity will lead to improved patient care. At the conclusion of this symposium, the participant will be able to:

- ▶ Recognize signs and symptoms of stroke that prompt emergency evaluation and treatment.
- ▶ Specify current options for diagnosis and treatment of stroke.
- ▶ Identify atrial cardiopathy as a mechanism of stroke.
- ▶ Recognize and appreciate the risk of stroke in patients with cancer.
- ▶ Describe current management for patients with carotid disease.
- ▶ Specify advancements in treatment of stroke in the field using the Mobile Stroke Unit.
- ▶ Discuss medical and surgical treatment options for intracerebral hemorrhage.



▶ TO REGISTER

Ms. Pamela Williams, Director
Continuing Medical Education
tel: 718-670-1419 • fax: 718-661-7925
email: pgw9001@nyp.org
REGISTER ONLINE:
www.nypqcme.org

AGENDA

- 7:30-8:15 am Registration | Continental Breakfast
- 8:15-8:30 am **Welcome Remarks**
- 8:30-9:00 am **Overview on the Management of Ischemic Stroke**
Gary L. Bernardini, MD, PhD
Professor and Chair, Department of Neurology
NewYork-Presbyterian/Queens
Vice-Chair, Department of Neurology
Weill Cornell Medical College
- 9:00-9:30 am **Mechanism of Stroke: Atrial Cardiopathy**
Shadi Yaghi, MD
Assistant Professor of Neurology
The Warren Alpert Medical School of Brown University
Stroke Faculty
Rhode Island Hospital
- 9:30-10:00 am **Stroke in Patients with Cancer**
Babak B. Navi, MD, MS
Assistant Professor of Neurology
Assistant Professor of Neurosciences
Weill Cornell Medical College
Medical Director of the Cornell Stroke Center
NewYork-Presbyterian/Weill Cornell Medical Center
- 10:00-10:30 am **Management of Carotid Disease**
Randolph S. Marshall, MD, MS
Elisabeth K. Harris Professor of Neurology
Chief, Stroke Division, Department of Neurology
Columbia University College of Physicians and Surgeons
NewYork-Presbyterian/Columbia University Medical Center
- 10:30-11:00 am **Panel Discussion**
- 11:00-11:30 am Break
- 11:30-12:00 pm **Back to the Future: Advances in Stroke Treatment in the Mobile Stroke Unit**
Michael P. Lerario, MD
Assistant Professor of Clinical Neurology
NewYork-Presbyterian/Weill Cornell Medical Center
Attending Neurologist, NewYork-Presbyterian/Queens
- 12:00-12:30 pm **Advances in Medical Management of Intracerebral Hemorrhage: What We Know and What We Think We Know**
Feliks Koyfman, MD
Associate Professor of Clinical Neurology
NewYork-Presbyterian/Weill Cornell Medical Center
Director of Stroke and Attending Neurologist
NewYork-Presbyterian/Queens
- 12:30-1:00 pm **Neurosurgical Intervention in Intracerebral Hemorrhage**
Ning Lin, MD
Assistant Professor, Neurological Surgery
Weill Cornell Medical College
Attending Neurosurgeon, NewYork-Presbyterian/Queens
- 1:00-1:30 pm **Panel Discussion**
- 1:30 pm Adjourn

ACCREDITATION

NewYork-Presbyterian/Queens is accredited by the Medical Society of the State of New York to provide continuing medical education for physicians.

NewYork-Presbyterian/Queens designates this live activity for a maximum of **4.5AMA PRA Category 1 Credit(s)**™. Physicians should claim only the credit commensurate with the extent of their participation in the activity.

DISCLOSURE STATEMENT

NewYork-Presbyterian/Queens relies upon planners and faculty participants in its CME activities to provide educational information that is objective and free of bias. In this spirit, and in accordance with the guidelines of MSSNY and ACCME, all speakers and planners for CME activities must disclose any relevant financial relationships with commercial interests whose products, devices or services may be discussed in the content of a CME activity that might be perceived as a real or apparent conflict of interest. Any discussion of investigational or unlabeled uses of a product will be identified.

REGISTRATION FEES

\$50	Physicians
\$25	General Registrants
No Fee	Physicians-in-training, NYP/Queens Physicians & Staff (copy of NYP/Queens ID required with registration)

Fee includes continental breakfast, lunch and course materials.

CANCELLATION

Refunds will only be made upon receipt of written notification a minimum of five work days prior to the session.

DIRECTIONS

NewYork-Presbyterian/Queens is located on the corner of Booth Memorial Avenue and Main Street in Flushing. *From the Long Island Expressway:* take the Main Street Exit (#23), travel north on Main Street to Booth Memorial Avenue. *From the Whitestone Bridge:* take the Van Wyck Expressway to the College Point Blvd. Exit; turn left on College Point Blvd. and right on Booth Memorial Avenue. Follow Booth Memorial Avenue to Main Street. *From the IRT Flushing Line #7:* train to Main Street (last stop), then Q44 bus southbound on Main Street; stops opposite the Hospital. NewYork-Presbyterian/Queens is located in a residential area with metered parking. Free lock-and-park spaces are available under the Van Wyck Expressway at College Point Blvd. and 58th Road. Shuttle buses to the Hospital run approximately every 10-15 minutes. Limited paid parking is available in our Visitor Parking Lot located on Booth Memorial Avenue opposite the NewYork-Presbyterian/Queens Emergency Room.

SPECIAL NEEDS

NYP/Queens is accessible for individuals with disabilities or special needs. Participants with special needs are requested to contact the Office of Continuing Medical Education at 718-670-1419.