

Common Cancers: What the Primary Care Physician Needs to Know

Tuesday, Sept. 29, 2015
8:00 am-1:00 pm
NYP/Queens, Lang Center
56-45 Main Street
Flushing, NY

THREE EASY WAYS TO REGISTER:

- 1 **Online:** Go to website: www.nypqcme.org and pay via credit card
- 2 **Fax:** This form with credit card information to: **718.661.7925**
- 3 **Mail:** This form with a check made payable to:
NYHQ-Continuing Medical Education
Mail to: Pamela Williams, Dir., Continuing Medical Education
NewYork-Presbyterian/Queens
56-45 Main Street, Flushing, NY 11355

REGISTRATION FEE-Please check one.

- ☐ **\$50/Physician** ☐ **\$25/General Registrant** **Questions? 718-670-1419**
- ☐ **\$20/person-Group of 5 or more** (other than Physicians)
- ☐ **No Fee/Physicians-in-training, NYP/Queens Physicians & Staff** (copy of ID required, pre-registration requested)

Last Name _____

First Name _____

MD _____ General Registrant _____

Mailing Address _____

City/State/Zip _____

Phone _____ Fax _____

E-mail _____

Affiliation _____

☐ **Yes. I wish to pay by credit card. Card holder name ▼**

Charge \$ _____ to my ☐ VISA ☐ MasterCard

☐ American Express ☐ Discover Security Code _____

Card Number _____

Expiration Date ____/____/____

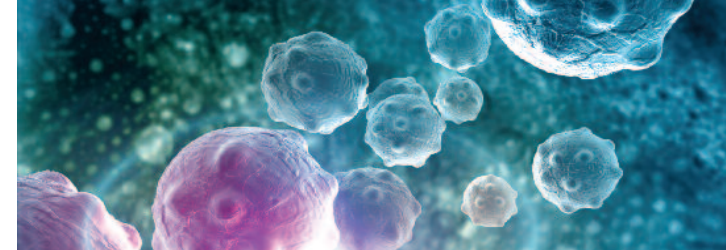
Authorizing Signature _____

 **NewYork-Presbyterian
Queens**

PRESORTED
FIRST CLASS MAIL
US POSTAGE
PAID
SMITHTOWN, NY
PERMIT NO. 15

**NewYork-Presbyterian
Queens**
NewYork-Presbyterian/Queens
Continuing Medical Education
56-45 Main Street
Flushing, NY 11355

**Common Cancers:
What the Primary Care
Physician Needs to Know**
9/29/15



Common Cancers: What the Primary Care Physician Needs to Know

Tuesday, September 29, 2015

8:00 am-1:00 pm • NYP/Queens, Lang Center



Co-Chairs

Barry H. Kaplan, MD, PhD
Clinical Associate Professor
of Medicine

Weill Cornell Medical College
Chief, Division of Medical Oncology
NewYork-Presbyterian/Queens

Howard I. Tiszenkel, MD, FACS, FASCRS

Assistant Professor of Surgery
Weill Cornell Medical College
Director, Proctology Program
Department of Surgery
Chairman, Continuing
Medical Education
NewYork-Presbyterian/Queens

Registration

718-670-1419
www.nypqcme.org

Location

NewYork-Presbyterian/Queens
Theresa and Eugene M. Lang
Center for Research
and Education
56-45 Main Street
Flushing, NY

Credit

4.0 AMA PRA
Category 1 Credit(s)™

 **NewYork-Presbyterian
Queens**

Common Cancers: What the Primary Care Physician Needs to Know

Tuesday, September 29, 2015 • 8:00 am-1:00 pm

Co-Chairs

Barry H. Kaplan, MD, PhD

Howard I. Tiszenkel, MD, FACS, FASCRS

Presented by

**NewYork-Presbyterian/Queens (NYP/Queens)
Continuing Medical Education in collaboration
with the Division of Hematology/Oncology.**

Statement of Need

Nearly one-third of office visits are handled by Primary Care Physicians. The care of cancer patients can be enhanced by continued involvement of the Primary Care Physician. There are studies that suggest that survivors who see both an Oncologist and a Primary Care Physician are more likely to receive recommended follow-up care than are survivors who see one or the other. The role of the Primary Care Physician in the interdisciplinary team may include helping with decisions concerning diagnostic procedures and treatment options, providing psychological support, treating intercurrent disease, continuing patient-appropriate preventive care, addressing patient and family concerns, recognizing and co-managing complications of cancer and cancer therapies. In order to provide optimal patient care, Primary Care Physicians need to be updated on current management options, on research concerning genes and the immune system, and on new developments guiding the diagnosis and treatment of breast cancer, ovarian cancer, prostate cancer, colorectal cancer and lung cancer.

Target Audience

Primary Care Physicians, Family Practice Physicians, Residents, Interns, Medical Students, Physician Assistants, Nurse Practitioners, Registered Nurses, and other Health Care Professionals on the primary care team aiding cancer patients.

Educational Objectives

It is intended that this NYP/Queens CME activity will lead to improved patient care. At the conclusion of this symposium, the participant will be able to:

- Specify the Primary Care Physician's roles and responsibilities in overseeing continuity of care for the cancer patient.
- Identify the need for, and initiate cancer screenings.
- Explain the current treatment options and services available.
- Identify and address family concerns.
- Coordinate/provide the follow-up care when the cancer survivor no longer requires specialized care.

To register

Ms. Pamela Williams, Director, Continuing Medical Education

tel: 718-670-1419 • fax: 718-661-7925

email: pgw9001@nyp.org

www.nypqcme.org

AGENDA

8:00-8:30 am	Registration and Continental Breakfast
8:30-8:45 am	Welcoming Remarks Barry H. Kaplan, MD, PhD Clinical Associate Professor of Medicine Weill Cornell Medical College Chief, Division of Medical Oncology NYP/Queens
8:45-9:30 am	Is Your Patient at Risk for Ovarian Cancer? David A. Fishman, MD Director of Cancer Center; Vice Chairman of OB/GYN NYP/Queens Professor of Obstetrics and Gynecology Weill Cornell Medical College
9:30-9:45 am	Role of the Primary Care Physician: The Coordinating of Care Daniel J. Byrns, MD Attending Physician, Department of Medicine, NYP/Queens
9:45-10:05 am	Genes and the Immune System: The Revolution in Cancer Treatment Barry H. Kaplan, MD, PhD
10:05-10:15 am	Q/A Discussion
10:15-10:25 am	Coffee Break
10:25-10:55 am	Multidisciplinary Management of Breast Cancer Manmeet K. Malik, DO Instructor of Clinical Surgery, Weill Cornell Medical College Attending Breast Surgeon Associate Program Director of General Surgery, NYP/Queens
10:55-11:15 am	Prostate Cancer Screening and Management: Moving Beyond PSA Gerald J. Wang, MD Assistant Professor of Clinical Urology Weill Cornell Medical College Chief, Section of Urology, NYP/Queens
11:15-11:25 am	Q/A Discussion
11:25-11:45 am	Radiation Therapy Community Practice: A Team Approach Akkamma Ravi, MD Associate Professor of Radiation Oncology Weill Cornell Medical College Attending Physician Department of Radiation Oncology, NYP/Queens
11:45-12:05 pm	Colorectal Cancer: What the Primary Care Physician Needs to Know Howard I. Tiszenkel, MD, FACS, FASCRS Assistant Professor of Surgery Weill Cornell Medical College Director, Proctology Program, Department of Surgery Chairman, Continuing Medical Education, NYP/Queens
12:05-12:25 pm	New Developments in Understanding and Treating Lung Cancer Paul C. Lee, MD, FCCP, FACS Professor of Cardiothoracic Surgery Weill Cornell Medical College Vice Chairman, Department of Cardiothoracic Surgery Chief of Thoracic Surgery, NYP/Queens
12:25-12:45 pm	Q/A Discussion
12:45-1:00 pm	Closing Remarks
1:00 pm	Lunch

Accreditation

NewYork-Presbyterian/Queens is accredited by the Medical Society of the State of New York to provide continuing medical education for physicians.

NewYork-Presbyterian/Queens designates this live activity for a maximum of **4.0 AMA PRA Category 1 Credit(s)**[™]. Physicians should claim only the credit commensurate with the extent of their participation in the activity.

Disclosure Statement

NewYork-Presbyterian/Queens relies upon planners and faculty participants in its CME activities to provide educational information that is objective and free of bias. In this spirit, and in accordance with the guidelines of MSSNY and ACCME, all speakers and planners for CME activities must disclose any relevant financial relationships with commercial interests whose products, devices or services may be discussed in the content of a CME activity that might be perceived as a real or apparent conflict of interest. Any discussion of investigational or unlabeled uses of a product will be identified.

Registration Fees

\$50	Physicians
\$25	General Registrants
\$20/person	Group of 5 or more (other than Physicians)
No Fee	Physicians-in-training, NYP/Queens Physicians & Staff (copy of NYP/Queens ID required with registration)
Fee includes continental breakfast, lunch and course materials.	

Cancellation

Refunds will only be made upon receipt of written notification a minimum of five work days prior to the session.

Directions

NewYork-Presbyterian/Queens is located on the corner of Booth Memorial Avenue and Main Street in Flushing. *From the Long Island Expressway:* take the Main Street Exit (#23), travel north on Main Street to Booth Memorial Avenue. *From the Whitestone Bridge:* take the Van Wyck Expressway to the College Point Blvd. Exit; turn left on College Point Blvd. and right on Booth Memorial Avenue. Follow Booth Memorial Avenue to Main Street. *From the IRT Flushing Line #7:* train to Main Street (last stop), then Q44 bus southbound on Main Street; stops opposite the Hospital. NewYork-Presbyterian/Queens is located in a residential area with metered parking. Free lock-and-park spaces are available under the Van Wyck Expressway at College Point Blvd. and 58th Road. Shuttle buses to the Hospital run approximately every 10-15 minutes. Limited paid parking is available in our Visitor Parking Lot located on Booth Memorial Avenue opposite the Emergency Room.

Special Needs

NewYork-Presbyterian/Queens is accessible for individuals with disabilities or special needs. Participants with special needs are requested to contact the Office of CME at 718-670-1419.